

MIX MAX

Bone Cement & Mixing System

How to operate

- 1 Open the package.
- 2 Open the lid of the cement mixer.
- 3 Pour medical bone cement into container of cement mixer.
- 4 Close the lid of the open cement mixer.
- 5 Mix the cement.
- 6 Open the cement mixer.
- 7 Remove the mixed cement with spatula.

Caution

Disposable products must be treated with medical waste after use.



Efficiency
High quality
Ergonomic Design

MIX MAX

Bone Cement & Mixing System

We have been able to develop the new upgraded PMMA Bone Cement and mixing device. By using this, the efficiency of surgery can be increased.



Indications

Severely painful osteoporotic compression fractures painful vertebral body tumors (metastasis or myeloma) Symptomatic Vertebral Hemangioma

Features

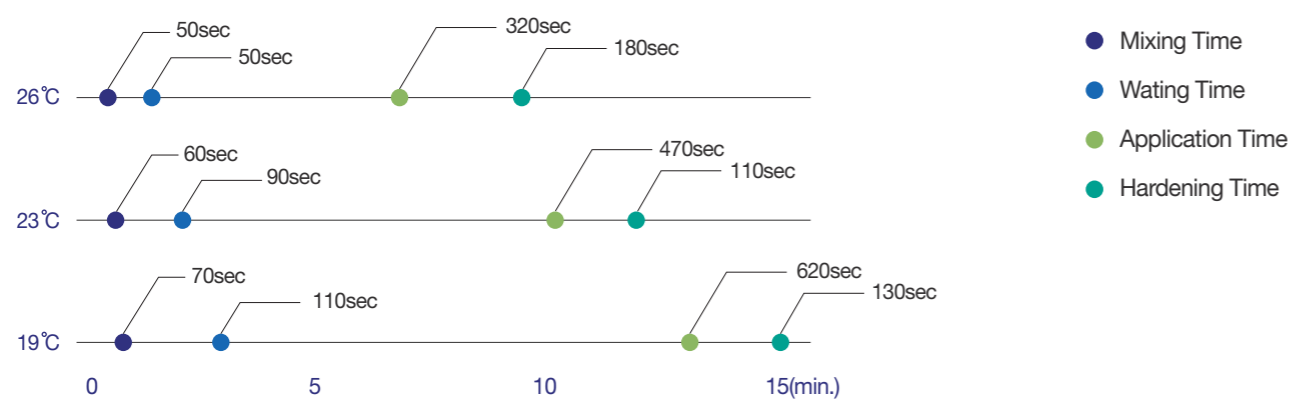
High radiopaque cement includes 60% of ZrO2 Optimized viscosity for Vertebroplasty and Kyphoplasty short mixing and preparing time allows to inject the cement immediately Good mechanical properties



Feature

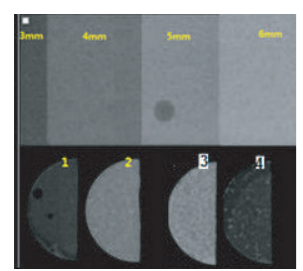
- **Ergonomic Design** Ergonomic design allows easy mixing.
- **Efficiency** Waste of cement can be minimized by using spatula.
- **High quality** The cement density can be increased by mixing in vacuum.

Chart of handling time at Various Temperature



"Fig.1 : Times shown in the chart were obtained by 2 hours storage at 20° before use condition"

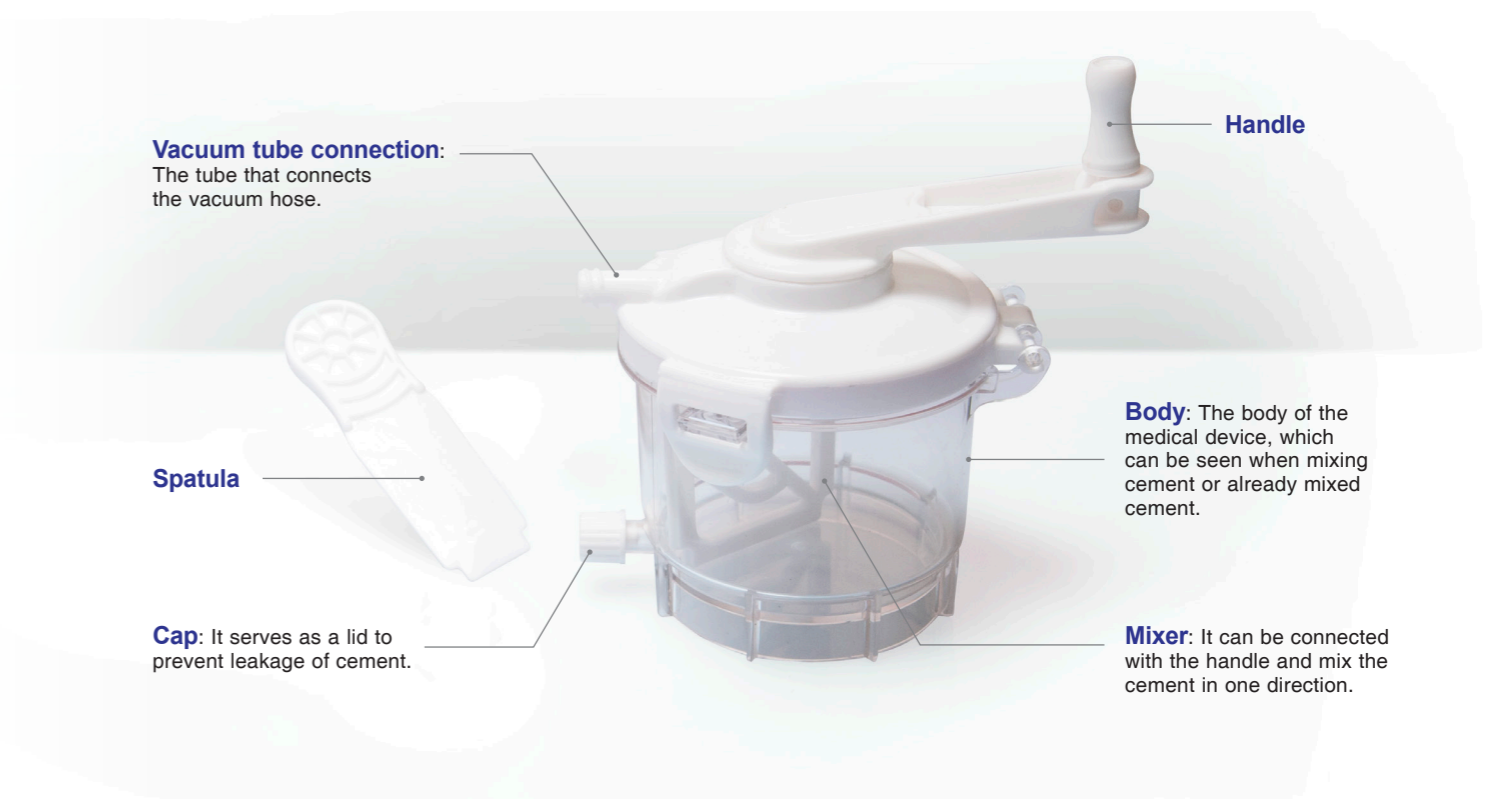
High radiopacity property



Pic 1 shows the Al step-wedge by 3, 4, 5, 6mm and below Pic shows the brightness of each product which can be compared to Al step-wedge

The following table shows the radiopacity property of MixMax cement, NTCem Spine (old version), and two other brands.

No	Products Name	Contrast agent name and amount added	Al(mm)
1	NTCem Spine	ZrO2 30%	2.2
2	MixMax	ZrO2 30%	4.6
3	"B" brand	ZrO2 30%	4.7
4	"S" brand	BaSO4 30%	2.4



Ordering Information

	Model	Bone Cement	Cement Mixer
1	SWMX-MS-02	SWMX-BM-01	SWMX-CMS-02