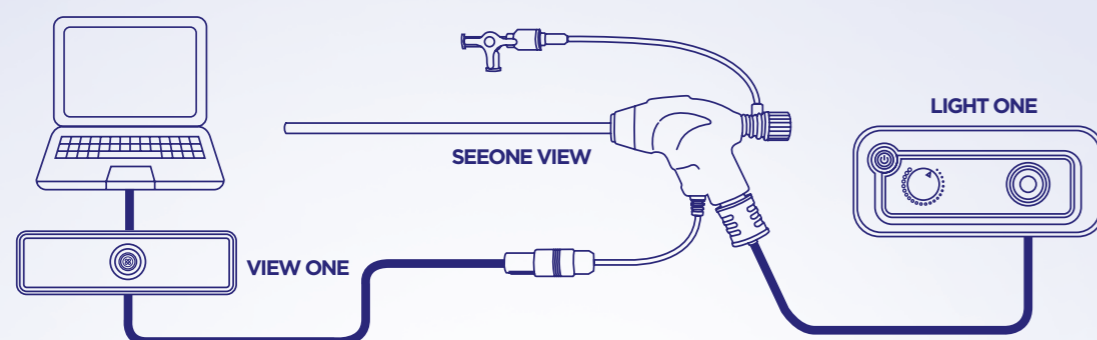


## Configuration of SEEONE VIEW



View One Specification			Light One Specification		
Type		Image processing device	Type		Endolight
Size		150X140X45	Size		210X255X110
Resolution		160k (400x400 pixel)	Power Supply	Voltage	100-240VAC
Power Supply	Voltage	USB 5Vdc		Frequency	50/60Hz
	Power		LED	Power	60W (15A)
Cable	Video	2m		CCT range	6500k (Cold white)
	Type	USB C 2.0 compatible		Brightness	0~100
			Cable	Fiber optic	2m
				Power	1.5m

# SEEONE VIEW

## Epidural Endoscopic Catheter System

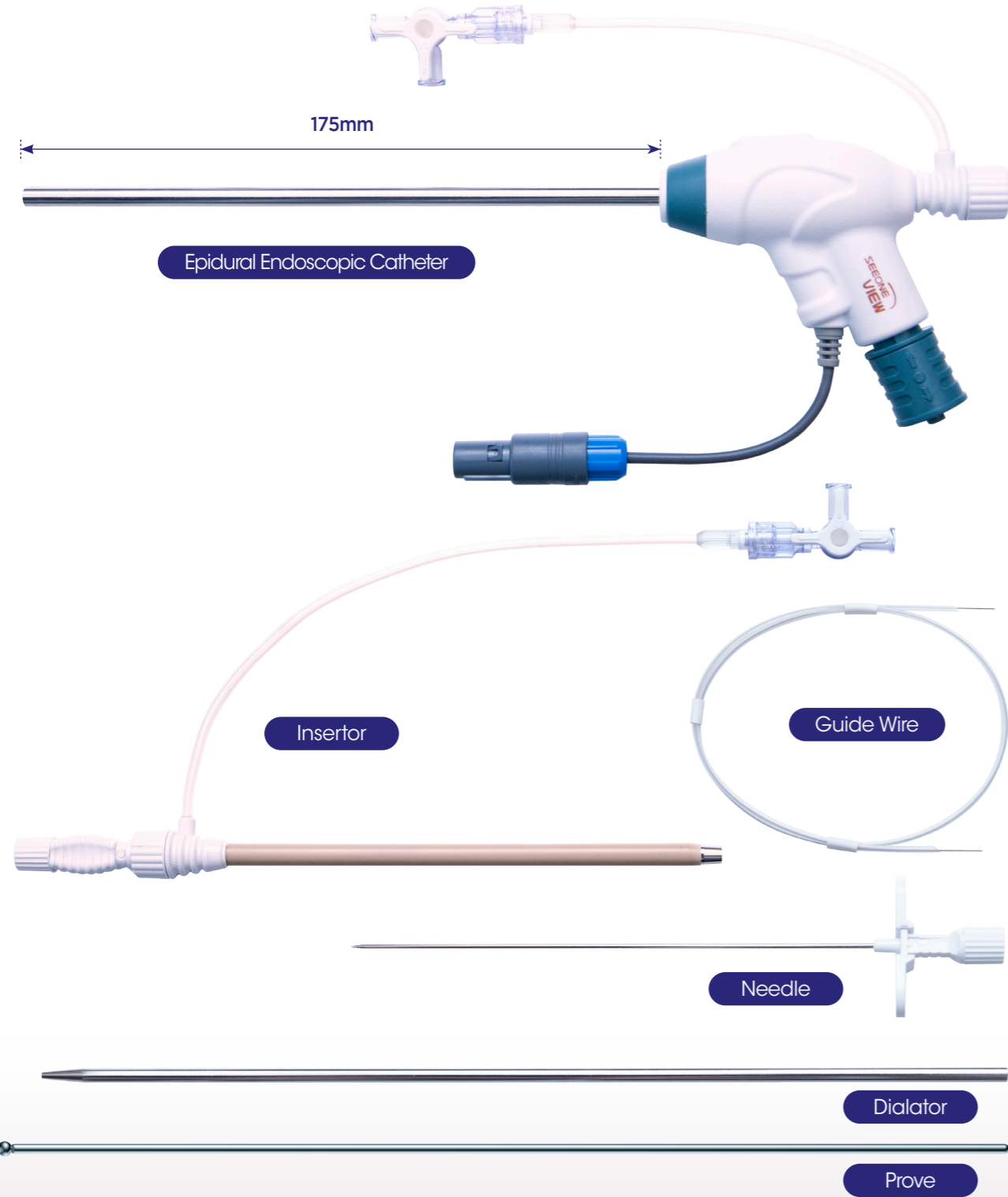
- Microendoscopic camera with high resolution & 160K
- Accurate treatment with visualization
- Minimally invasive

SEEONE VIEW

Epidural Endoscopic Catheter System

SEEONE VIEW is a micro-endoscope system with 160K high-definition camera, working channel and optical fiber for LED light.

It provides real-time images using the high-definition camera by delivering light supplied from light source through optical fiber. Therefore, the largest benefit of SEEONE VIEW is that users can directly check the region of lesion and make a precise diagnosis and treatment. Moreover, drugs can be injected through the working channel.



Features



High-Resolution

**High Resolution Camera**  
The high- resolution enables precise diagnosis and surgical operation, with more rapid access to lesions and reducing surgery time

Safe

**Minimally invasive**  
Minimum incision to reduce pain and recovery time.

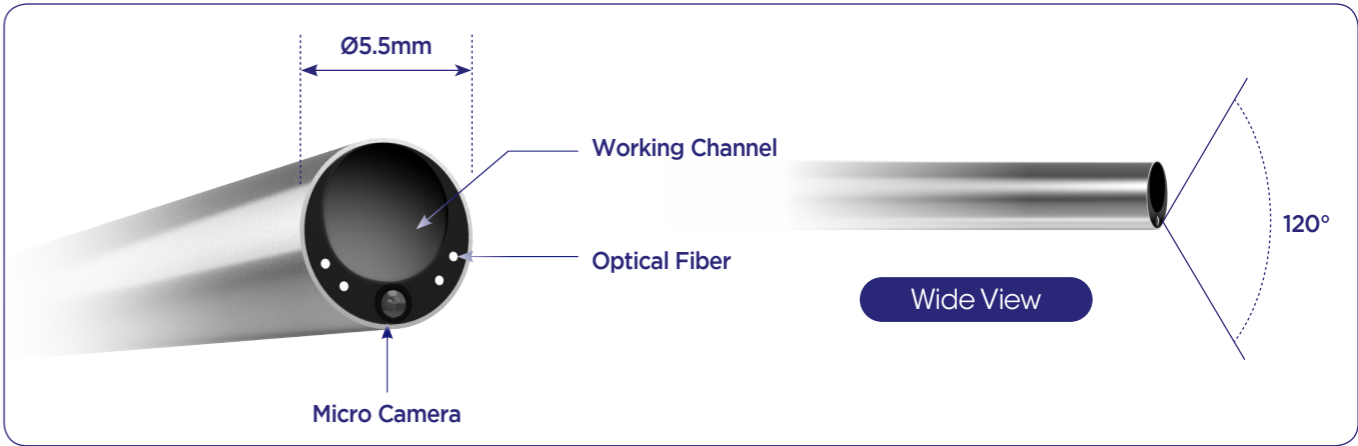
**Accurate treatment with visualization and illumination**  
Provides superior images enabling more safe operation.

Easy

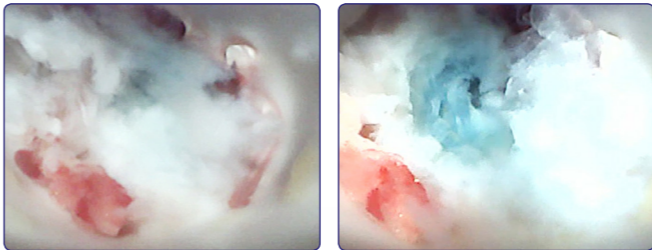
**Easy-to-use program**  
It uses a dedicated program

**Easy-to-use ergonomic design**  
Ergonomic handle design easy to use

**View device for illumination intensity control**  
Convenient for users to directly adjust illumination intensity on the view.



Optimal image quality



Model Spec

Epidural Endoscopic Catheter	
Type	Endoscope
Endoscope Diameter	Ø5.5mm
Working Channel Diameter	Ø3.0mm
Angle of View	120°
Angle of Curve	0°
Effective Pixels	160,000 (400 x 400)